

Product End-of-Life Instructions

Product Range: Vigi NG125

Marketing Model/Name:

The End of Life Instruction (EOLI) covers the entire range:

- Vigi NG125 63A Type I, IS, IS+, ISR 500V - 2P-3P-4P
- Vigi NG125 125A Type I, IS, IS+, ISR 500V – 2P-3P-4P

Purpose:

The product family must be disposed according to the legislation of the country. This document is intended for use by end of life recyclers or treatment facilities. It provides the basic information to assure an appropriate end of life treatment for the components and materials of the product.

Note :

This product family is not in the scope of EU directive 2002/96/EC, Waste Electrical and Electronic Equipment (WEEE).



Size in mm

H x L x D in mm: 135 x 135 x 90 for a 2-pole
250 x 135 x 90 for a 3-pole or 4-pole

Weight in kg: 0.24 kg for a 2-pole
0.92 kg for a 3-pole or 4-pole

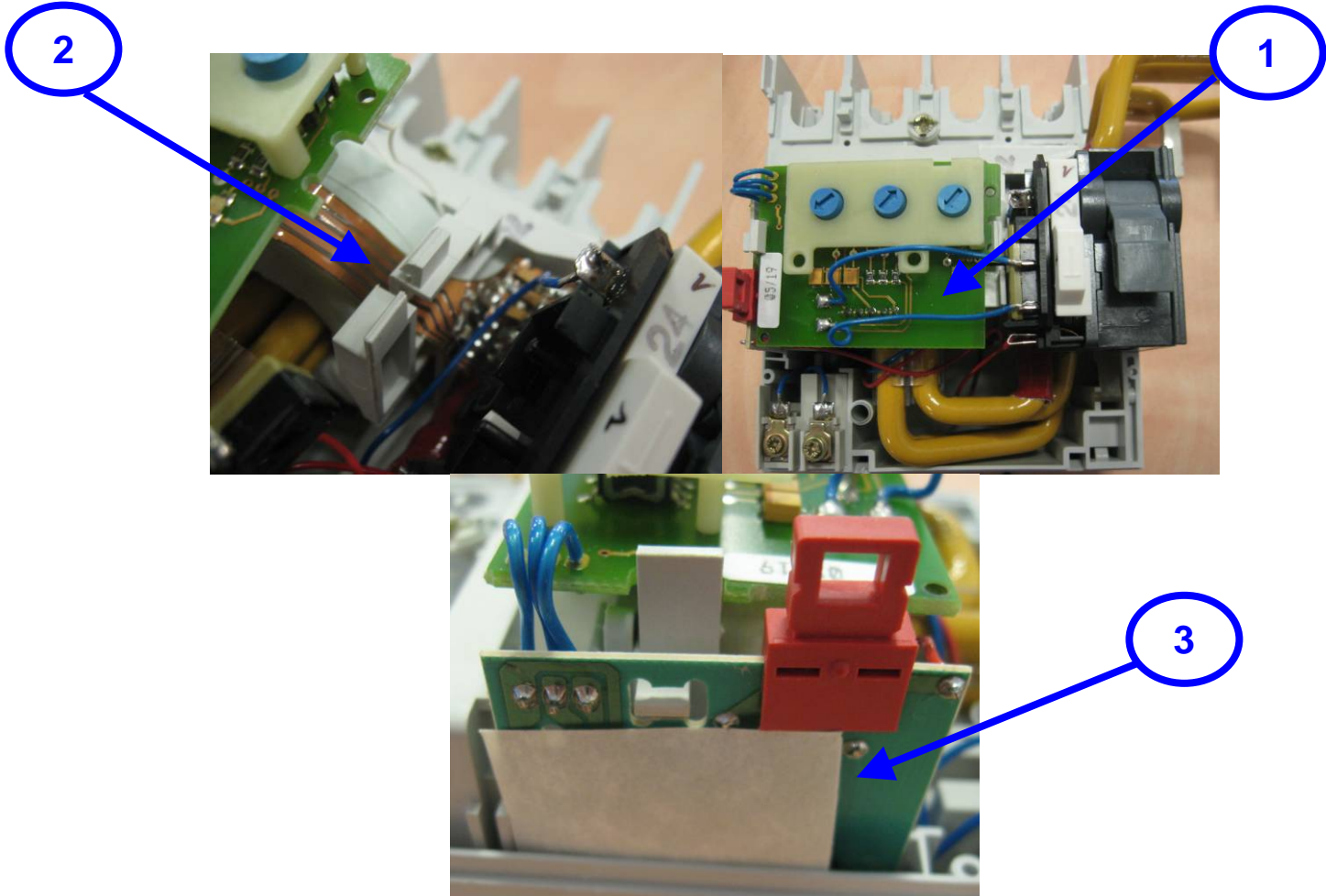
Operations recommended for the end of life treatment

There are several steps to process the products at the end of life so as to recover components, materials or energy :
Reuse → Depollution (special treatment) → Dismantling → Shredding.

The components of the products that optimize the recycling performances are listed, identified and located hereunder.

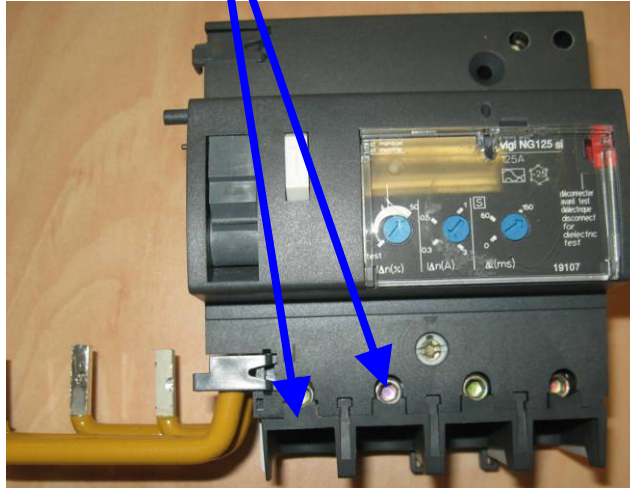
This product contains printed circuit boards which are recommended to be treated separately during the End of Life operations.

Component which must be cleared of pollution:



Dismantle process

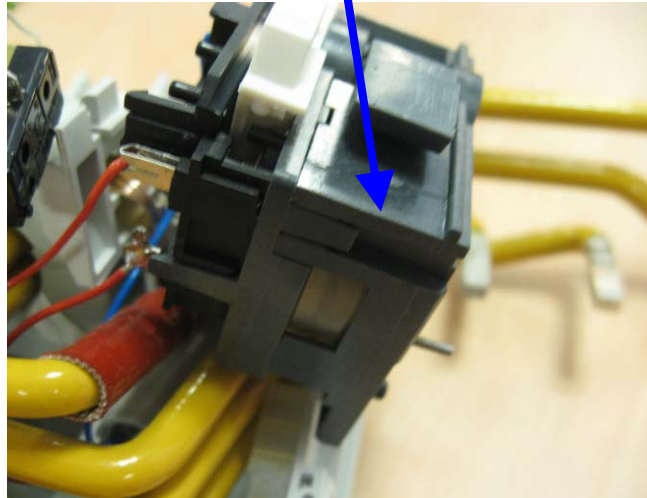
Remove the
Plastic part and then the screws



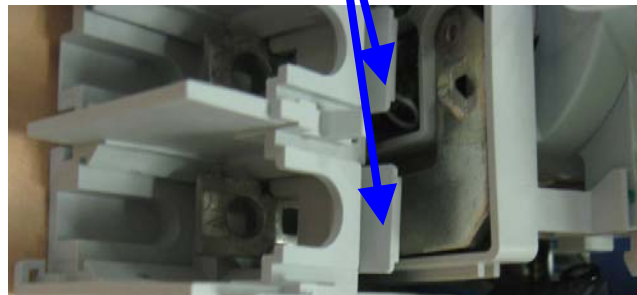
Remove the
Clips on each side of
the product



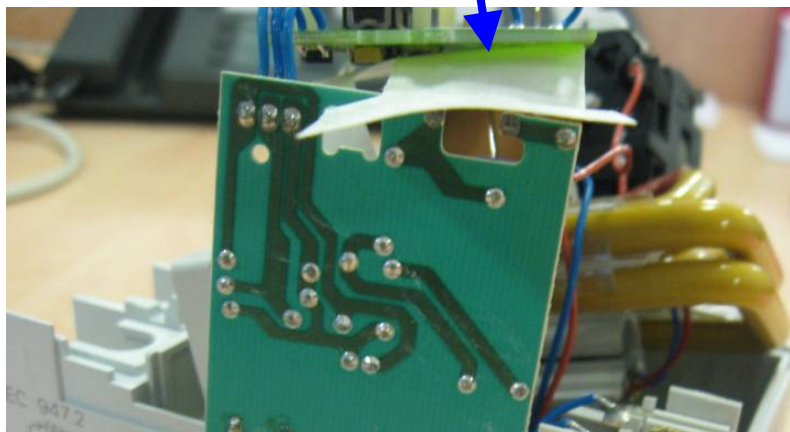
Remove the Mechanism



Remove the 4 Insulating parts



Remove the internal sub assembly from the base and cut the electrical wires to remove the printed circuit boards from the sub assembly



Number on drawing	Components	Surface	Comment
Components listed for special treatment			
1	Printed circuit board 1	> 10 cm ²	Remove the internal sub-assembly to extract the PCBA
2	Flexible Printed circuit board 2	> 10 cm ²	Remove the internal sub-assembly to extract the PCBA
3	Printed circuit board 3	> 10 cm ²	Remove the internal sub-assembly to extract the PCBA

Schneider Electric SA

43-45, boulevard Franklin Roosevelt
F-92500 Rueil-Malmaison Cedex (France)
Tel.: +33 (0) 1 41 29 70 00
www.schneider-electric.com

The version of the Guide used to create the document: End of Life
Instruction Drafting Guide of Schneider Electric version V2

ENVEOLI111001EN

Publication date : 06/10/2011