

Product data sheet

Specifications



flat screen, Harmony GTU, 15inch wide display, 1024 x 768pixels XGA

HMIDT732

Product availability: Stock - Normally stocked in distribution facility

Price*: 3,701.12 USD

Main

| | |
|---------------------------|---------------------------|
| Range of Product | Harmony GTU |
| Product or Component Type | Flat screen |
| Terminal type | Touchscreen display |
| [Us] rated supply voltage | 12...24 V DC power supply |
| Supply voltage limits | 10.8...28.8 V |
| Power Consumption in W | 22 W |
| Inrush current | 30 A |

Complementary

| | |
|----------------------------|---------------------------------------|
| Integrated connection type | USB 2.0 type A USB 2.0 type mini B |
| Touchscreen resolution | 1024 x 1024 |
| Pixel resolution | 1024 x 768 |
| Display size | 15 inch |
| Aspect ratio | 4:3 |
| Display type | Colour TFT LCD |
| Display Resolution | 1024 x 768 pixels XGA |
| Display colour | 16 million colours |
| Backlight lifespan | 50000 hours |
| Touch panel | Multi touch analogue resistive |
| Function Available | Brightness sensor |
| Type of cooling | Natural convection |
| Type of Installation | Indoor installation |
| cut-out dimensions | 383.5 (+ 1/- 0) x 282.5 (+ 1/- 0) mm |
| Width | 15.6 in (397 mm) |
| Height | 11.7 in (296 mm) |
| Depth | 2.6 in (67 mm) |
| Net Weight | 9.9 lb(US) (4.5 kg) |

Environment

Price is "List Price" and may be subject to a trade discount – check with your local distributor or retailer for actual price.

| | |
|--|---|
| IP degree of protection | Front panel IP66 Front panel IP67 |
| NEMA degree of protection | NEMA 4X front panel |
| Standards | UL 508 ANSI/ISA 12-12-01 Class I division 2 CSA C22.2 No 213 CSA C22.2 No 142 IEC 61132-2 |
| Product certifications | CULus RCM KC CE UKCA UKEX |
| Ambient air temperature for operation | 32...140 °F (0...60 °C) IEC 61131-2 |
| Ambient air temperature for storage | -4...140 °F (-20...60 °C) |
| Relative Humidity | 10...90 % non-condensing |
| Operating altitude | 6561.68 ft (2000 m) |
| Vibration resistance | 3.5 mm constant amplitude 5...9 Hz IEC 61131-2 9.8 m/s ² 9...150 Hz IEC 61131-2 |
| Shock resistance | 147 m/s ² IEC 61131-2 |
| Electromagnetic compatibility | Electrostatic discharge immunity test level 3 conforming to IEC 61000-4-2 |

Ordering and shipping details

| | |
|--------------------------|---------------|
| Category | US10MC222567 |
| Discount Schedule | 0MC2 |
| GTIN | 3606480687228 |
| Returnability | Yes |
| Country of origin | US |

Packing Units

| | |
|-------------------------------------|--------------------------|
| Unit Type of Package 1 | PCE |
| Number of Units in Package 1 | 1 |
| Package 1 Height | 5.906 in (15.000 cm) |
| Package 1 Width | 14.961 in (38.000 cm) |
| Package 1 Length | 20.709 in (52.600 cm) |
| Package 1 Weight | 13.682 lb(US) (6.206 kg) |

Contractual warranty

| | |
|-----------------|-----------|
| Warranty | 18 months |
|-----------------|-----------|

Sustainability

Green Premium™ label is Schneider Electric's commitment to delivering products with best-in-class environmental performance. Green Premium promises compliance with the latest regulations, transparency on environmental impacts, as well as circular and low-CO₂ products.

Guide to assessing product sustainability is a white paper that clarifies global eco-label standards and how to interpret environmental declarations.

[Learn more about Green Premium >](#)


[Guide to assess a product's sustainability >](#)



Transparency RoHS/REACH

Well-being performance

 Mercury Free

 Rohs Exemption Information Yes

Certifications & Standards

Reach Regulation [REACH Declaration](#)

Eu Rohs Directive Pro-active compliance (Product out of EU RoHS legal scope)

China Rohs Regulation [China RoHS declaration](#)

Environmental Disclosure [Product Environmental Profile](#)

Weee The product must be disposed on European Union markets following specific waste collection and never end up in rubbish bins.

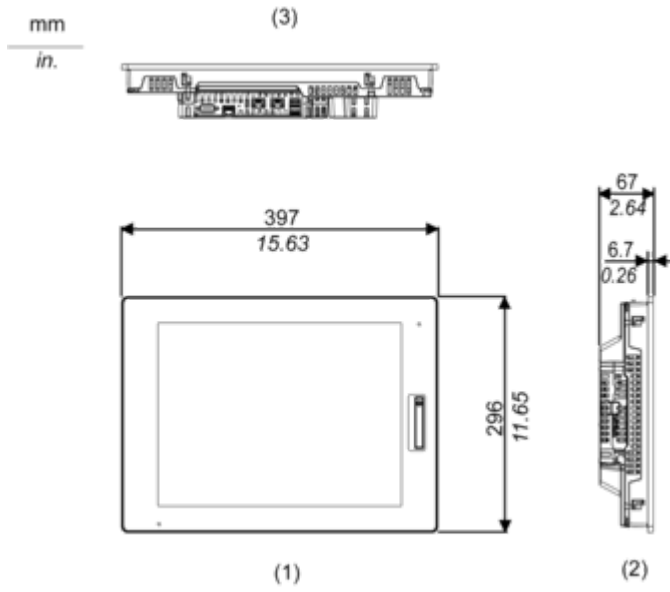
Circularity Profile [End of Life Information](#)

California Proposition 65 "WARNING: This product can expose you to chemicals including: Lead and lead compounds, which is known to the State of California to cause cancer and birth defects or other reproductive harm. For more information go to www.P65Warnings.ca.gov"

Dimensions Drawings

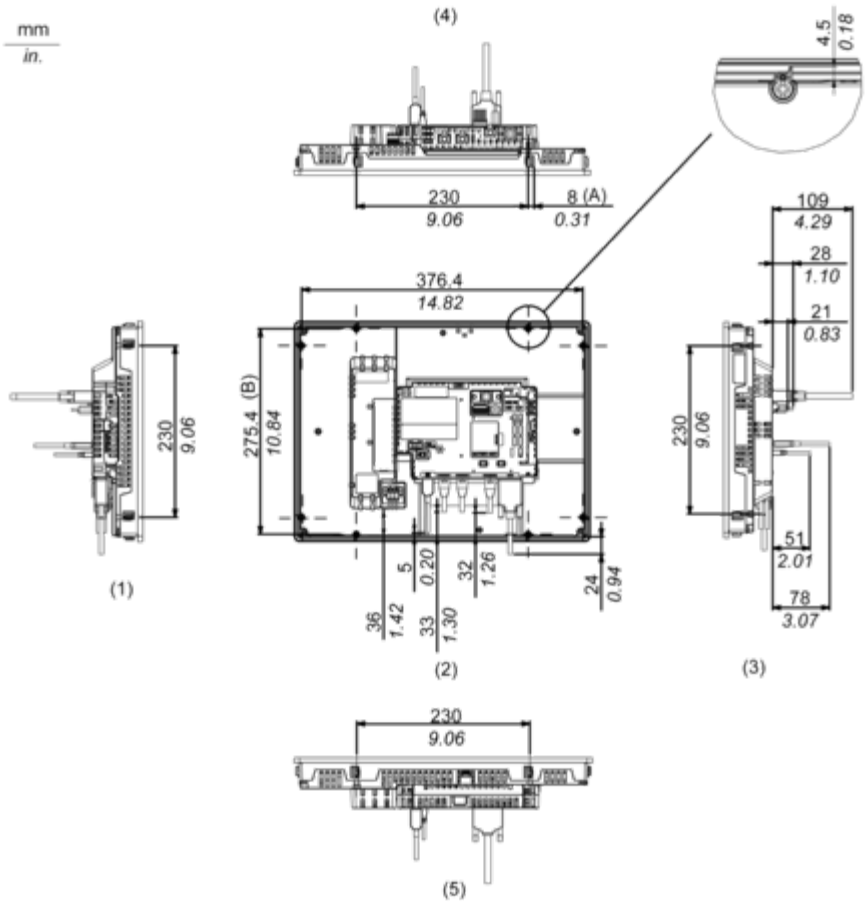
External Dimensions

Display Unit with Box Module



- 1 Front
- 2 Left
- 3 Bottom

Installation with Installation Fasteners and Dimensions with Cables



(A) Rotation area of the fastener

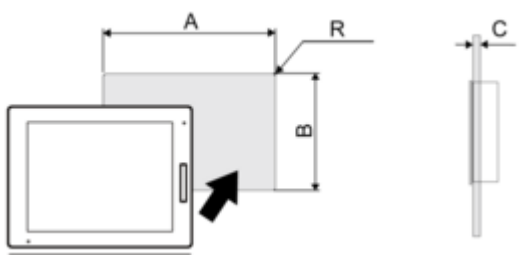
(B) Pitch of the center of installation fastner screws

- 1 Right
- 2 Front
- 3 Left
- 4 Bottom
- 5 Top

Mounting and Clearance

Mounting

Panel Cut Dimensions



Dimensions in mm

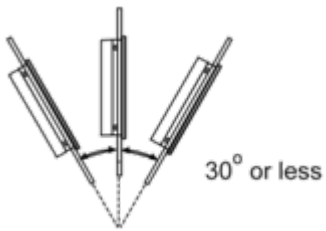
| A | B | C | R |
|---------------|---------------|---------|--------|
| 383.5 (+1/-0) | 282.5 (+1/-0) | 1.6...5 | 3 max. |

Dimensions in in.

| A | B | C | R |
|------------------|------------------|------------|-----------|
| 15.10 (+0.04/-0) | 11.12 (+0.04/-0) | 0.06...0.2 | 0.12 max. |

Installation Requirements

Mounting Angle



When installing this product in a slanted position with an incline more than 30°, the ambient temperature must not exceed 40 °C (104 °F). You may need to use forced air cooling (fan, A/C) to ensure the ambient operating temperature is 40 °C or less (104 °F or less).

Clearance

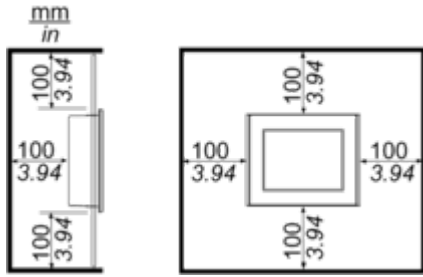


Image of product / Alternate images

Alternative

